

TRADE CREDIT DECISION MAKING BASED ON PORTFOLIO MANAGEMENT APPROACH

Dr. Grzegorz Michalski, Assistant Professor

Department of Corporate Finance and Value Management
Wrocław University of Economics, Wrocław, Poland
ul. Komandorska 118/120 p. Z704; PL53-345 Wrocław, Poland
tel. 0048713680747, fax 0048717181717
Grzegorz.Michalski@ae.wroc.pl; <http://michalskig.com/>

The basic financial purpose of an enterprise is maximization of its value. Trade credit management should also contribute to realization of this fundamental aim. Many of the current asset management models that are found in financial management literature assume book profit maximization as the basic financial purpose. These book profit-based models could be lacking in what relates to maximization of enterprise value. The enterprise value maximization strategy is executed with a focus on risk and uncertainty. This article presents the consequences that can result from operating risk related to purchasers using payment postponement for goods and / or services. The present article offers a method that uses portfolio management theory to determine the level of accounts receivable in a firm. An increase in the level of accounts receivables in a firm increases both the net working capital and the costs of holding and managing accounts receivables.

Keywords: *accounts receivable, trade credit management, incremental analysis, value based management, portfolio analysis*

JEL: G32, G11, M11, D81, O16, P33, P34

1. Introduction

The basic financial aim of an enterprise is maximization of its value. At the same time, both the theoretical and practical meanings are researched for determinants that increase the enterprise value. Financial literature contains information about numerous factors that influence enterprise value. Among those contributing factors is the extent of the net working capital and the elements shaping it, such as the level of cash tied up in accounts receivable, inventories, the early settlement of accounts payable, and opera-

tional cash balances. The greater part of classic financial models and proposals relating to optimum current assets management was constructed with net profit maximization in mind. This is the reason why these models need reconstruction to make them suitable to firms that want to maximize their value.

2. Literature review

The decision whether to extend the trade credit terms is a compromise between limiting the risk of allowing for the payment postponement from

unreliable purchasers and gaining new customers by way of a more liberal enterprise trade credit policy. This decision shapes the level and quality of accounts receivable. Robichek et al. (1965) discuss the risk involved in accounts receivable decisions, which must be accepted by financial institutions pledging of accounts receivable of the firm. Smith (Smith, 1973) predicts that portfolio theory may be used to decrease accounts receivable risk. Friedland (Friedland, 1966) agrees that current assets could be viewed in portfolio context. Pringle and Cohn (1974) even try to adapt CAPM theory to working capital elements. Bierman and Hausman (1970) discuss the granting policy of a firm and show that trade credit policy requires balancing the future sales gains against possible losses. Lewellen, Edmister and Johnson (1972, 1973) explain how and why traditional devices used for monitoring accounts receivable should be replaced by new and better ones.

The question discussed in this article concerns the possibility of using portfolio theory in making decisions about selecting which customers should be given trade credit. We will show that it is possible that the firm sells on trade credit terms to some customers who were previously rejected because of too great an operational risk, with a positive outcome of the creation of increased firm value. This extension of trade credit is possible only if the firm has purchasers from various branches, and if these branches have different levels of operating risk. The key to success for a firm is to perform portfolio analysis with the result of a varied portfolio of customers with a spectrum of managed levels of operating risk.

3. Value-based management of accounts receivable

If holding accounts receivable on a level defined by the enterprise provides greater advantages than

a negative influence, the firm value will grow. Changes in the level of accounts receivable affect the value of the firm. To measure the effects that these changes produce, we use the following formula based on the assumption that the firm present value is the sum of the future free cash flows to the firm (*FCFF*) discounted by the rate of the cost of capital financing the firm:

$$\Delta V_p = \sum_{t=1}^n \frac{\Delta FCFF_t}{(1+k)^t}, \quad (1)$$

where ΔV_p = firm value growth, $\Delta FCFF_t$ = future free cash flow growth in period t , and k = discount rate¹.

Future free cash flow is expressed as

$$FCFF_t = (CR_t - CE_t - NCE) \times (1 - T) + NCE - Capex - \Delta NWC_t, \quad (2)$$

where CR_t = cash revenues on sales; CE_t = cash expenses resulting from fixed and variable costs in time t ; NCE = non-cash expenses; T = effective tax rate; ΔNWC = net working growth; and $Capex$ = capital expenditure resulting from the growth of operational investments (money used by a firm to acquire or upgrade physical assets, such as property, industrial buildings, or equipment).

Similar conclusions, related to the results of changes in trade credit policy on the firm value can be estimated on the basis of economic value added, i.e. the extent to which residual profit (the added value) increased the value of the firm during the period:

$$EVA = NOPAT - k \times (NWC + OI) \quad (3)$$

where EVA = economic value added; NWC =

¹ To estimate changes in accounts receivable levels, we accept a discount rate equal to the average weighted cost of capital (WACC). Such changes and their results are strategic and long-term in their character, although they refer to accounts receivable and short-run area decisions, see: (Maness, Zietlow, 1998, pp. 62–63).

net working capital; OI = operating investments; and $NOPAT$ = net operating profit after tax, estimated on the basis of the formula:

$$NOPAT = (CR_t - CE_t - NCE) \times (1 - T) \quad (4)$$

The net working capital (NWC) is the part of current assets that is financed with fixed capital. The net working capital (current assets less current liabilities) results from the lack of synchronization of the formal rising receipts and the real cash receipts from each sale. It is also caused by a divergence during time of rising costs and the time when a firm pays its accounts payable.

$$NWC = CA - CL = AAR + INV + G - AAP, \quad (5)$$

where NWC = net working capital; CA = current assets; CL = current liabilities; AAR = average level of accounts receivable; INV = inventory; G = cash and cash equivalents; and AAP = average level of accounts payable.

During estimation of the free cash flows, the holding and increasing of net working capital ties up money used for financing the net working capital. If the net working capital increases, the firm must utilize and tie up more money,

and this decreases free cash flows. Production level growth necessitates increased levels of cash, inventories, and accounts receivable. Part of this growth will be covered with current liabilities that automatically grow with the growth of production and sales. The remaining cash requirements (that are noted as net working capital growth, ΔNWC) will require a different form of financing.

Trade credit policy decisions changing the terms of trade credit create a new accounts receivable level. Consequently, trade credit policy has an influence on the firm value. This comes as a result of alternative costs of money tied in accounts receivable and general costs associated with managing accounts receivable. Both the first and the second involve modification of future free cash flows and, as a consequence, the firm value changes. In Figure 1, we show the influence of trade credit policy changes on firm value. These decisions change:

- future free cash flows ($FCFF$),
- life of the firm (t) and
- rate of the cost of capital financing the firm (k).

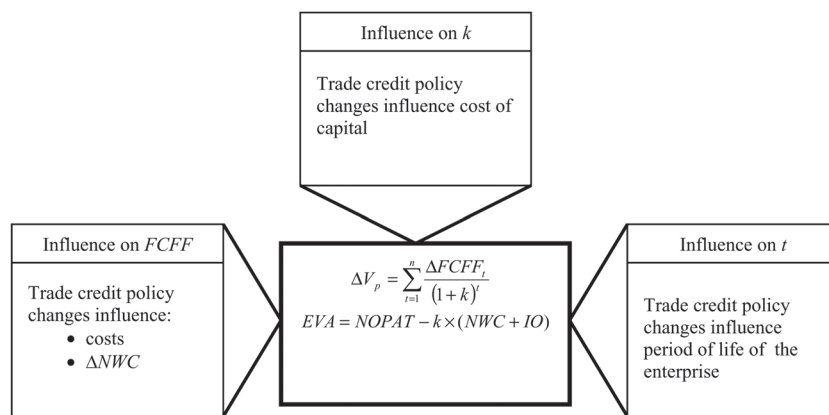


Figure 1. Trade credit policy influence on firm value

$FCFF$ = free cash flows to firm, ΔNWC = net working capital growth, k = cost of the capital financing the firm, and t = the lifetime of the firm and time to generate single $FCFF$. Source: our own study.

Changes to these three components influence the creation of the firm value (ΔVp).

Accounts receivable changes (resulting from changes in trade credit policy of the firm) affect the net working capital level and also the level of accounts receivable management operating costs in a firm; these operating costs are a result of accounts receivable level monitoring and recovery charges).

Trade credit terms give evidence about a firm trade credit policy. They are the parameters of trade credit and include:

- the maximum delay in payment by purchasers (trade credit period);
- the time the purchaser has to pay with a cash discount; and
- the rate of the cash discount.

The length of the cash discount period and the maximum delay in payment by purchasers give information about the character of a firm trade credit policy. These trade credit conditions are:

$$ps / os, net ok, \quad (6)$$

where ps = cash discount rate, os = cash discount period, and ok = maximum payment delay period.

The terms of a trade credit sale are the result of a firm's management decision made on the basis of information about factors such as:

- market competition,
- the kind of goods or services offered,
- seasonality and elasticity of demand,
- price,
- type of customer, and
- profit margin from sale.

It is important to match the length of the trade credit of a firm to its customer's capabilities. The enterprise giving the trade credit should take into account the purchasers' inventory conversion cycle as well as its accounts receivable con-

version cycle. These two elements make up the operating cycle of a purchaser. The shorter this cycle, the shorter the maximum payment delay period offered to a purchaser should be. The maximum payment delay period for purchaser is the maximum expected period of accounts receivable cycle for a seller.

In order to choose what terms of sale should be proposed to the purchaser, a firm management can use the incremental analysis as final criterion, as well as to compare the influence of these proposals on firm value. Incremental analysis is a tool for estimating the effects of changes in trade credit policy on the enterprise. This analysis usually takes into account three basic elements:

(1) estimation of the results of changes on sales as well as losses resulting from bad debts,

(2) estimation of the changes in the firm accounts receivable level.

Accounts receivable growth is

$$\begin{aligned} \Delta AAR &= (ACP_1 - ACP_0) \times \frac{CR_0}{360} + VC \times ACP_1 \times \\ &\times \frac{CR_1 - CR_0}{360}, \text{ if } CR_1 > CR_0, \\ \Delta AAR &= (ACP_1 - ACP_0) \times \frac{CR_1}{360} + VC \times ACP_0 \times \\ &\times \frac{CR_1 - CR_0}{360}, \text{ if } CR_1 \leq CR_0, \end{aligned} \quad (7)$$

where ΔAAR = accounts receivable growth, ACP_0 = receivables collection period before trade credit policy change, ACP_1 = receivables collection period after trade credit policy change, CR_0 = cash revenue before trade credit policy change, CR_1 = cash revenue after trade credit policy change, and VC = variable costs (in percent from sales incomes).

(3) Estimation of the firm value change:

$$\begin{aligned} \Delta EBIT &= [(CR_1 - CR_0) \times (1 - VC) - k_{AAR} \times \\ &\times \Delta AAR + -(l_1 \times CR_1 - l_0 \times CR_0) - (sp_1 \times \end{aligned}$$

$$\times CR_1 \times w_1 - sp_0 \times CR_0 \times w_0)], \quad (8)$$

where $\Delta EBIT$ = earnings before interests and taxes growth, k_{AAR} = operating costs of accounts receivable management in a firm, l_0 = bad debts losses before trade credit policy change, l_1 = bad debts losses after trade credit policy change, sp_0 = cash discount before trade credit policy change, sp_1 = cash discount after trade credit policy change, w_0 = part of purchasers using cash discount before trade credit policy change, and w_1 = part of purchasers using cash discount after trade credit policy change.

To check how changes in the accounts receivable level and $EBIT$ influence the firm value, it is possible to use changes in future free cash flows. First we have changes in $FCFF$ in time 0:

$$\Delta FCFF_0 = -\Delta NWC = -\Delta AAR. \quad (9)$$

Next, the free cash flows to the firm in periods (from 1 to n) as:

$$\Delta FCFF_{1..n} = \Delta NOPAT = \Delta EBIT \times (1 - T). \quad (10)$$

Example 1. An enterprise $CR_0 = 500\,000\,000$ €. $VC = 50\% \times CR$. Operating costs of accounts receivable management in a firm, $k_{AAR} = 20\%$. $WACC = 15\%$. $T = 19\%$. Before trade credit policy change, half of firm customers pay before delivery. 25% of them use 2% cash discount paying on the 10th day. The remaining customers pay at the 30th day. Bad debts losses are 3% of CR . The trade credit policy changes (from 2/10, net 30 to 3/10, net 40) considered by firm will result: 40% of firm customers will pay before delivery; 30% of them use 3% cash discount paying on the 10th day; the remaining customers pay at the 45th day. Bad debts losses are 4% of CR . New $CR_1 = 625\,000\,000$ €. The effects of changes in trade credit policy would be felt for 3 years.

Because 50% of sale before change of policy is done in cash, 25% on principle of collected

on the 30th day, 25% on principle of charge regulated up to the 10th day, then the ACP_0 is:

$$ACP_0 = 0.5 \times 0 + 0.25 \times 10 + 0.25 \times 30 = 10 \text{ days.}$$

The ACP_1 after change is:

$$ACP_1 = 0.4 \times 0 + 0.3 \times 10 + 0.3 \times 45 = 16.5 \text{ days.}$$

That is why the expected increase of the average level of accounts receivable will be:

$$\Delta AAR = (16.5 - 10) \times \frac{500000000}{360} + 0.5 \times 16.5 \times \frac{125000000}{360} = 11\,892\,361 \text{ €.}$$

Therefore, as a result of trade credit policy change, the average state of accounts receivable will grow by 11 892 361 €.

Next, we have $\Delta EBIT$:

$$\Delta EBIT = 125000000 \times 0.5 - 20\% \times 11892361 - (4\% \times 625000000 - 3\% \times 500000000) + (-3\% \times 625000000 \times 30\% - 2\% \times 500000000 \times 25\%) = 46\,996\,527.8 \text{ €.}$$

Using equations (9) and (10), we can estimate firm value growth:

$$\Delta V = -11\,892\,361 + \frac{46\,996\,527.8 \times 0.81}{0.15} \times \left(1 - \frac{1}{1.15^3}\right) = 75\,023\,598 \text{ €.}$$

As we can see, the trade credit policy change will increase the firm value. Similar information is given by estimation of ΔEVA after trade policy change:

$$\Delta EVA = 0.81 \times 46\,996\,527.8 - 15\% \times 11\,892\,361 = 36\,283\,333 \text{ €.}$$

As one can see through the above case, the first half and then 40% of sales are realized on the principle of cash sale. This results from the

fact that those customers who created sales only for cash did not fulfil the requirements relating to the risks, which is considered as a percentage of delayed payments. Therefore, the firm stopped offering these purchasers sales on the principle of trade credit. This was despite the fact that their financing with the trade credit made it possible to notice much greater activity and a higher level of income from sales than at the trade credit relinquishment.

4. Portfolio theory approach in trade credit decisions

A portfolio is a set of assets (for example, accounts receivable). The portfolio approach to accounts receivable management can be used by utilizing the rate of profit (rate of advantage from assets) as one of the basic criteria that the firm giving the trade credit should encourage the purchaser to consider when making decisions (Jajuga, Jajuga, 1994, pp. 80–110). The profit rate resulting from the trade credit can be defined as

$$R_{nAR} = \frac{\Delta CR - \Delta Costs}{\Delta Costs}, \quad (11)$$

where R_{nAR} = profit rate from giving the trade credit to purchasers n , ΔCR = cash revenue growth generated from additional sale to n customers instead of the cash sale, and $\Delta Costs$ = growth of costs resulting from offering the trade credit to purchaser n .

The present rate of profit is realized in conditions of risk and uncertainty. The rate of profit changes varies according to the various probabilities. These probabilities result from customers' marketable situations which influence their ability to regulate their accounts payable to the seller in an appropriate manner. The risk measure connected with the accounts receivable of a

particular purchaser varies according to the following equation:

$$V = \sum_{i=1}^m p_i \times (R_i - R)^2, \quad (12)$$

where p_i = based on historical data probability of R_i , and R_i = expected rate of return from accounts receivable from the group of purchasers i .

The measure of risk also can be defined according to the standard deviation:

$$s = \sqrt{V} = \sqrt{\sum_{i=1}^m p_i \times (R_i - R)^2}. \quad (13)$$

Both the variation and the standard deviation can be estimated for the historical data of a purchaser.

The next element is the correlation of profit from the trade credit given to the purchaser (or to a group of purchasers) in which the profits of the trade credit are given to other purchasers (or to different groups of purchasers). If the firm completes transactions with more than one group of purchasers, it is possible to distinguish two or more homogeneous groups in relation to the risk and profit from giving a trade credit. In this case, the portfolio approach can be used. These groups can belong to definite trades², and a connection does or may exist between the accounts receivables of these groups of purchasers. The measure of such a connection is usually the coefficient of correlation:

$$\rho_{1,2} = \frac{\sum_{i=1}^m p_i \times (R_{1i} - R_1) \times (R_{2i} - R_2)}{s_1 \times s_2}, \quad (14)$$

² In Polish business practice, purchasers from the same trade group have a similar payment because they serve the same market and have similar customers with similar payment habits.

where $\rho_{1,2}$ = the coefficient of the first and second groups of accounts receivable correlation, R_1 = the expected rate of return from accounts receivable of the first group of purchasers, R_2 = expected rate of return from accounts receivable of the second group of purchasers, s_1 = standard deviation for the first group, s_2 = standard deviation for the second group, R_{1i} = individual rate of return from accounts receivable of purchaser i from the first group of purchasers, R_{2i} = individual rate of return from accounts receivable of purchaser i from the second group of purchasers, and p_i = probability of individual rate of return from accounts receivable of purchaser i .

To show how the portfolio approach may be used in accounts receivable management, we will use the portfolio of two groups of accounts receivable as an example.

Example 2. The firm cooperates with two homogeneous groups of purchasers. The first group of purchasers delivers its services to industry A, the second group of purchasers serves customers from industry B. Creating a portfolio of two kinds of accounts receivable makes sense only

when the correlation between profits from the giving trade credit for these groups is less than 1.

Example 2, Case 1. The correlation coefficient between accounts receivable profits from groups A and B equals 1, $\rho_{A,B} = 1$.

Figure 2 shows that there is no possibility of increasing profit from diversification without increasing risk if $\rho_{A,B} = 1$.

Example 2, Case 2. The coefficient of correlation is (-1), $\rho_{A,B} = (-1)$: a perfect negative correlation.

At Point A we offer trade credit only to Group A. At point B we offer trade credit to Group B. If we are following from Point A (and we are enlarging the contribution of Group B to accounts receivable portfolio) to A/B₁, the risk s is decreasing and the profit R is increasing. As we see in Figure 3, it makes no sense to possess accounts receivable only from Group A. It is because with identical risk s , the portfolio A/B₂ offers a higher profit R .

Example 2, Case 3. The coefficient of correlation is equal 0, $\rho_{A,B} = 0$. It is a situation when benefits from giving a trade credit to Group A and Group B are not related to each other in any way.

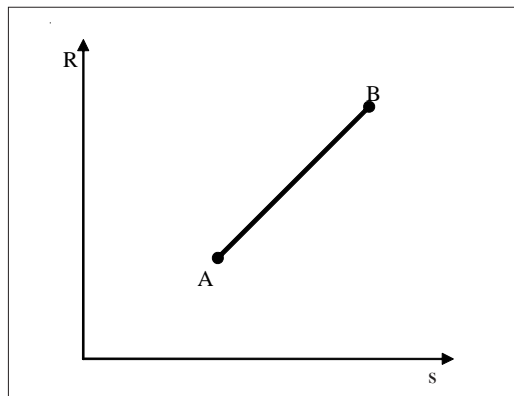


Figure 2. The profit-risk relation for portfolio of accounts receivable for two groups of purchasers if $\rho_{A,B} = 1$

Source: our own study on based on (Jajuga, Jajuga, 1994).

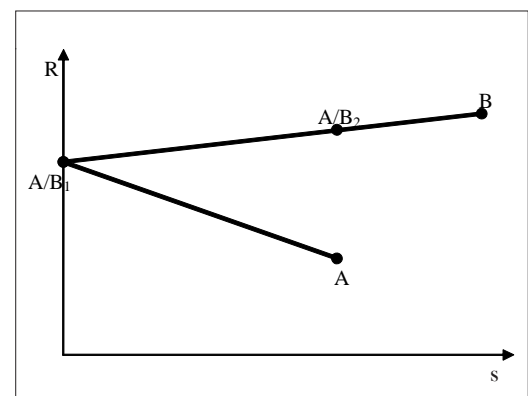


Figure 3. The profit-risk relation for portfolio of accounts receivable for two groups of purchasers if $\rho_{A,B} = (-1)$

Source: our own study based on (Jajuga, Jajuga, 1994).

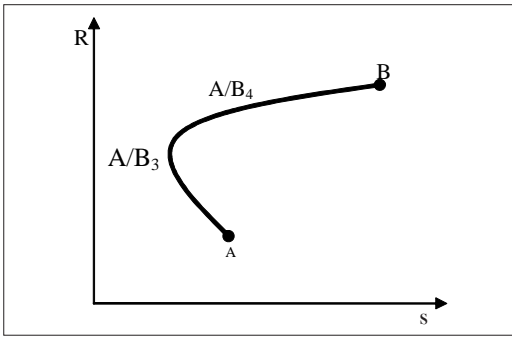


Figure 4. The profit-risk relation for portfolio of accounts receivable for two groups of purchasers if $\rho_{A,B} = 0$

Source: our own study based on (Jajuga, Jajuga, 1994).

In such a situation, the only possible is a partial reduction of risk. The reasonable firm should not choose any portfolio of charge lying on the A–A/B₃ line, because it is always possible to find a more profitable equivalent on the A/B₃–A/B₄ line, which with the same risk s gives a higher profit R . The skilful construction of two groups of accounts receivable portfolio can lead to a considerable reduction of risk. Inclusion to the single-asset portfolio of the second component almost always leads to risk decrease, sometimes even with a simultaneous profit growth (Brigham, Daves, p. 77).

Example 3 (continuation of example 1). After the historical data analysis had been made, firm managers noticed that the expected profits were higher and correlated negatively with profits generated from purchases by current customers. This came certainly from allowing a trade credit to customers who had made cash purchases because of the high risk during the receivables collection period. These trends lead to the expectation³ of a lower risk of profits from accounts receivable and to a simultaneous growth in profits from sales in general. A 3% cash discount was proposed to customers who paid within 10 days, along with an extension of

the payment deadline to 45 days for any remaining customers. As a result, 4% of sales would be paid for in cash, while 40% of customers would take advantage of the cash discount by paying by the 10th day. The remaining customers (46% of sales) would make their payments on the 45th day. Bad debts = 1% × CR. CR_t = 700 000 000 €. The effect of these changes in the trade credit policy would be felt for three years. In addition, VC would be reduced from 50% to 49% thanks to the advantages of scales resulting from larger sales (and increased production).

So, we have:

$$DSO_2 = 0.04 \times 0 + 0.40 \times 10 + 0.46 \times 45 = 24 \text{ days,}$$

$$\begin{aligned} \Delta AAR &= (24.7 - 10) \times \frac{500\,000\,000}{360} + \\ &+ 0.49 \times 24.7 \times \frac{200\,000\,000}{360} = \\ &= 27\,140\,556 \text{ € .} \end{aligned}$$

$$\begin{aligned} \Delta EBIT &= 200\,000\,000 \times 0.51 - 20\% \times \\ &\times 27\,140\,556 - (1\% \times 700\,000\,000 - 3\% \times \\ &\times 500\,000\,000) + \\ &- (3\% \times 700\,000\,000 \times 40\% - 2\% \times \\ &\times 500\,000\,000 \times 25\%) = 98\,671\,889 \text{ € .} \end{aligned}$$

Thus, we have the following change in the firm value:

$$\begin{aligned} \Delta V &= -27\,140\,556 + \frac{98\,671\,889 \times 0.81}{0.15} \times \\ &\times \left(1 - \frac{1}{1.15^3}\right) = 155\,344\,454 \text{ € .} \end{aligned}$$

The firm value will increase. The proposed change will be more profitable than in example

³ With admittance of taking both groups simultaneously on trade credit principles.

1 without using the portfolio approach. This related information comes from the estimation of *EVA* growth:

$$\Delta EVA = 0.81 \times 98\,671\,889 - 15\% \times \\ \times 27\,140\,556 = 75\,853\,147 \text{ €}.$$

5. Conclusions

Accounts receivable management decisions are very complex. On the one hand, too much money is tied up in accounts receivables because of the extremely liberal policy of giving a trade credit. This burdens the business with higher costs of accounts receivable service with additional high alternative costs. Additional costs are further

generated by bad debts from risky customers. On the other hand, the liberal trade credit policy could help enlarge income from sales. In the article, the problem was linked to the operational risk of purchasers interested in receiving a trade credit who, as separately considered groups, may characterize a too high risk level. However, if they are considered as one of several groups of enterprise customers, and if their payment habits are correlated with the payment habits of the remaining groups, what had been impossible could become possible and may even turn profitable. The portfolio of assets, like the portfolio of accounts receivables, sometimes presents a lower risk to acceptable advantages than the independently considered groups of purchasers.

BIBLIOGRAPHY

1. H. Bierman, W. H. Hausman, The credit granting decision, *Management Science*, vol. 16, no 8, Apr. 1970, pp. B519–532.
2. E. Brigham, P. Daves, *Intermediate Financial Management*, Thomson, Mason, 2004.
3. F. Fabozzi, G. Fong, *Zarządzanie portfelem inwestycji finansowych przynoszących stały dochód*, WN PWN, Warszawa 2000.
4. S. Friedland, *The Economics of Corporate Finance*, Englewood Cliffs, New Jersey, Prentice-Hall, 1966.
5. K. Jajuga, *Zarządzanie kapitałem*, Wydawnictwo Akademii Ekonomicznej we Wrocławiu, Wrocław 1993.
6. K. Jajuga, T. Jajuga, *Inwestycje. Instrumenty finansowe. Ryzyko finansowe. Inżynieria finansowa*, WN PWN, Warszawa 2002.
7. K. Jajuga, T. Jajuga, *Jak inwestować w papiery wartościowe*, WN PWN, Warszawa 1994.
8. K. Jajuga, K. Kuziak, Paweł Markowski, *Inwestycje finansowe*, Wydawnictwo AE, Wrocław 1997.
9. W. G. Lewellen, R. O. Edmister, A general model for accounts receivable analysis and control, *Journal of Financial and Quantitative Analysis*, March 1973, p. 195–206.
10. W. G. Lewellen, R. W. Johnson, *Better Way to Monitor Accounts Receivable*, Harvard Business Review, May–June 1972, p. 101–109.
11. D. Luenberger, *Teoria inwestycji finansowych*, WN PWN, Warszawa 2003.
12. T. Maness, J. Zietlow, *Short-term Financial Management*, Dryden Press, Fort Worth 1998.
13. G. Michalski, *Leksykon zarządzania finansami*, CHBeck, Warszawa 2004.
14. M. Piotrowska, *Finanse spółek. Krótkoterminowe decyzje finansowe*, Wydawnictwo AE, Wrocław 1997.
15. W. Pluta, G. Michalski, *Krótkoterminowe zarządzanie kapitałem*, CHBeck, Warszawa 2005.
16. J. J. Pringle, R. A. Cohn, Steps toward an integration of corporate financial theory, *Readings on the Management of Working Capital*, ed. K. V. Smith, St. Paul, Minnesota, West Publishing Company, 1974.
17. F. Reilly, K. Brown, *Analiza inwestycji i zarządzanie portfelem*, PWE, Warszawa 2001.
18. A. A. Robichek, D. Teichroew, J. M. J. M. Jones, *Optimal short-term financing decision*, Management Science, vol. 12, no 1, ser. A, Sciences, 1965, p. 1–36.
19. F. Scherr, *Modern Working Capital Management. Text and Cases*, Prentice Hall, Englewood Cliffs 1989.

PREKINIO KREDITO SPRENDIMAI PORTFELIO VALDYMO POŽIŪRIU

Grzegorz Michalski

Santrauka

Pagrindinis įmonės finansinis tikslas yra jos vertės didinimas. Prekinio kredito valdymas turėtų prisidėti prie šio svarbaus tikslo. Daugelis trumpalaikio turto valdymo modelių, kurie aptariami finansų valdymo literatūroje, remiasi prielaida, kad esminis finansinis tikslas – didinti buhalterinį pelną. Šie buhalteriniai pelnu grįsti modeliai gali būti siejami su kitu tikslu ir konkrečiai su įmonės vertės didinimu. Finansų literatūroje esama informacijos apie daugybę veiksnių, turinčių įtakos įmonės vertei. Tarp šių veiksnių yra grynojo apyvartinio kapitalo dydis ir jį formuojantys elementai, pavyzdžiui, grynujų lėšų lygis sąskaitose.

Sprendimas prekinio kredito požiūriu yra kompromisas tarp siekio riboti riziką, susijusią su leidimu atidėti mokėjimus nepatikimiems pirkėjams, ir noru turėti naujų klientų naudojant liberalesnę prekybinio kredito politiką. Toks sprendimas formuoja debitorinių įsiskolinimų lygį ir kokybę.

Straipsnyje diskutuojama, kaip pasinaudoti portfelio teorijos galimybėmis, sprendžiant, kuriems klientams turėtų būti duodamas prekinis kreditas. Parodyta, kad firma turi galimybę parduoti naudodama prekybinį kreditą ir tiems klientams, kuriems anksčiau buvo atsakyta dėl per didelės operacinės rizikos, tikintis firmos vertės didėjimo požiūriu teigiamo rezultato. Toks prekinio kredito didėjimas galimas tik jei firma dirba su įvairių sričių pirkėjais ir jei tose srityse yra skirtinga operacinė rizika. Esminis firmos sėkmės veiksnys yra gera portfelio analizė, kurioje atsižvelgiama į klientų portfelio įvairovę, operacinės jo rizikos spektro valdymo lygmenis.

Jeigu debitorinių įsiskolinimų laikymas tam tikru lygiu teikia didesnių pranašumų nei neigiamų padarinių, firmos vertė didės. Taigi debitorinių įsiskolinimų lygis turi įtakos firmos vertei. Siekiant išmatuoti šių pasikeitimų efektą, naudojama formulė, kuri yra grindžiama prielaida, kad firmos dabartinė vertė yra būsimųjų laisvųjų grynujų lėšų srautų suma, diskontuota finansuojančio firmą kapitalo sąnaudų norma. Grynasis apyvartinis kapitalas yra trumpalaikio turto dalis, finansuojama iš apyvartinio kapitalo. Apskaičiuojant laisvųjų lėšų srautus palaikomas ir didėjantis grynasis apyvartinis kapitalas, susiejantis pinigus, naudojamus grynajam apyvartiniam kapitalui finansuoti. Jeigu gryna-

sis apyvartinis kapitalas padidėja, firma turi naudoti daugiau pinigų, ir tai sumažina laisvųjų lėšų srautus. Gamybos lygiui kylant reikia didesnių lėšų atsargų ir debitorinių įsiskolinimų. Šis augimas iš dalies gali būti padengiamas iš einamųjų išpareigojimų, kurie automatiškai didėja didėjant gamybai ir pardavimams. Sprendimai dėl prekybos kreditų politikos, keičiantys prekybinio kredito sąlygas, skatina naują debitorinio įsiskolinimo lygį. Tai reiškia, kad prekybinio kredito politika turi įtakos firmos vertei. Tai yra alternatyvių lėšų, esančių debitorinio įsiskolinimo sąskaitose, ir bendrųjų kaštų, susijusių su gautinų sąskaitų valdymu, rezultatas. Ir pirmasis, ir antrasis jungia būsimųjų laisvųjų lėšų srautus ir kaip padarinį firmos vertės pasikeitimus. Debitorinių įsiskolinimų pasikeitimai turi poveikio grynojo apyvartinio kapitalo lygiui ir gautinų sąskaitų valdymo operacinėms sąnaudoms. Pastarosios rodo debitorinio įsiskolinimo atgavimo mokėjimus. Lėšų diskonto periodo trukmė ir maksimalus pirkėjų atliekamų mokėjimų uždelsimas teikia informacijos apie firmos prekinio kredito politikos pobūdį. Yra svarbu derinti prekinio kredito trukmę su kliento galimybėmis. Įmonė, suteikianti prekinį kreditą, turi atsižvelgti į pirkėjo atsargų konversijos ciklą ir į jo gaunamosios sąskaitos konversijos ciklą. Šie du elementai sudaro pirkėjo operacinį ciklą. Kuo trumpesnis šis ciklas, tuo trumpesnis turėtų būti pirkėjui siūlomas didžiausias mokėjimų uždelsimo periodas.

Debitorinių įsiskolinimų valdymo sprendimai yra labai sudėtingi. Viena vertus, per daug pinigų esant gaunamosiose sąskaitose dėl liberalios prekybinių kreditų teikimo politikos, tai padidina verslo našta dėl didesnių gaunamųjų sąskaitų aptarnavimo kaštų, o tai – didesni alternatyvūs kaštai. Papildomų kaštų susidaro kaupiantis blogoms skoloms, susijusiomis su rizikingais klientais. Antra vertus, liberali prekybos kreditų politika gali padėti padidinti pajamas iš pardavimų. Straipsnyje problema siejama su pirkėjų, suinteresuotų prekinio kreditu, operacine rizika, išeinančia iš grupių, kurioms būdinga per didelė rizika. Tačiau jei jos yra traktuojamos kaip viena iš kelių įmonės klientų grupių ir jeigu jų mokėjimo įpročiai yra susiję su kitų grupių mokėjimo įpročiais, tai, kas iš pradžių atrodo, negalimu, vėliau gali tapti galimu ir netgi pelningu variantu.

Grzegorz Michalski

Summary

The basic financial purpose of an enterprise is maximization of its value. Trade credit management should also contribute to realization of this fundamental aim. Many of the current asset management models that are found in financial management literature assume book profit maximization as the basic financial purpose. These book profit-based models could be lacking in what relates to another aim (i.e., maximization of enterprise value). Financial literature contains information about numerous factors that influence enterprise value. Among those contributing factors is the extent of the net working capital and the elements shaping it, such as the level of cash tied up in accounts receivable.

The decision if extend the trade credit terms, is a compromise between limiting the risk of allowing for the payment postponement from unreliable purchasers and gaining new customers by way of a more liberal enterprise trade credit policy. This decision shapes the level and quality of accounts receivable.

The question discussed in this article concerns the possibility of using portfolio theory in making decisions about selecting which customers should be given trade credit. In this article, we showed that it is possible that the firm can sell on trade credit terms to some customers, who previously were rejected because of too great an operational risk, with a positive outcome the creation of increased firm value. This extension of trade credit is possible only if the firm has purchasers from various branches, and if these branches have different levels of operating risk. The key to success for a firm is to perform portfolio analysis with the result of a varied portfolio of customers with a spectrum of managed levels of operating risk.

If holding accounts receivable on a level defined by the enterprise provides greater advantages than negative influence, the firm value will grow. Changes in the level of accounts receivable affect on the value of the firm. To measure the effects that these changes produce, we use the following formula, which is based on the assumption that the firm present value is the sum of the future free cash flows to the firm, discounted by the rate of the cost of capital financing the firm. The net working capital is the part of current assets that is financed with fixed capital. During estimation of the free cash flows, the holding and increasing of net working capital ties up money used for financing net working capital. If net working capital increases,

the firm must utilize and tie up more money, and this decreases free cash flows. Production level growth necessitates increased levels of cash, inventories, and accounts receivable. Part of this growth will be covered with current liabilities that automatically grow with the growth of production and sales. Trade credit policy decisions changing the terms of trade credit create a new accounts receivable level. Consequently, trade credit policy has an influence on firm value. This comes as a result of alternative costs of money tied in accounts receivable and general costs associated with managing accounts receivable. Both the first and the second involve modification of future free cash flows and as a consequence firm value changes. Accounts receivable changes affect the net working capital level and also the level of accounts receivable management operating costs in a firm; these operating costs are a result of accounts receivable level monitoring and recovery charges. The length of the cash discount period and the maximum delay in payment by purchasers give information about the character of a firm trade credit policy. It is important to match the length of the trade credit of a firm to its customer's capabilities. The enterprise giving the trade credit should take into account the purchasers' inventory conversion cycle as well as its accounts receivable conversion cycle. These two elements make up the operating cycle of a purchaser. The shorter this cycle, the shorter should be the maximum payment delay period offered to a purchaser.

Accounts receivable management decisions are very complex. On the one hand, too much money is tied up in accounts receivables, because of an extreme liberal policy of giving trade credit. This burdens the business with higher costs of accounts receivable service with additional high alternative costs. Additional costs are further generated by bad debts from risky customers. On the other hand, the liberal trade credit policy could help enlarge income from sales. In the article, the problem was linked to the operational risk of purchasers interested in receiving trade credit who, as separately considered groups, may characterize too high risk level. However, if they are considered as one of several groups of enterprise customers, and if their payment habits are correlated with the payment habits of the remaining groups, what was formerly impossible could become possible, and may even turn profitable.

Īteikta 2007 m. liepos mėn.

Priimta spausdinti 2007 m. spalio mėn.